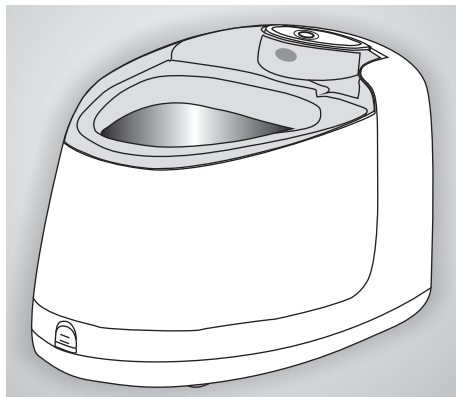




ULTRASONIC DENTURE CLEANER

Model F3900 USER GUIDE



Features:

- ✓ True ultrasonic cleaner with 42,000 Hz frequency
- ✓ AC powered, 20W, much more powerful and effective than AA battery operated denture cleaners
- ✓ Touch sensing control better for water proof
- ✓ Combined with iSonic® White™ denture cleaning crystal, it will remove toughest stains in 5 to 15 minutes and disinfect dental appliances too
- ✓ Use iSonic® AlignerClean™ for clear aligners, retainers, and for daily cleaning of other dental or sleep apnea appliances
- ✓ Use iSonic® NaturalKlean™ tablet for people who are sensitive to chemicals, especially persulfate
- ✓ One key to operate, 5 minutes auto shutoff
- ✓ Compact size, good for small pair of denture
- ✓ Good to clean small jewelry too

Introduction:

F3900 Ultrasonic Denture / Retainer Cleaner is designed to clean dentures, partials, retainers including Invisalign®, night guards, mouth guards and other dental appliances. The term denture or retainer used in the manual represents any of these dental appliances.

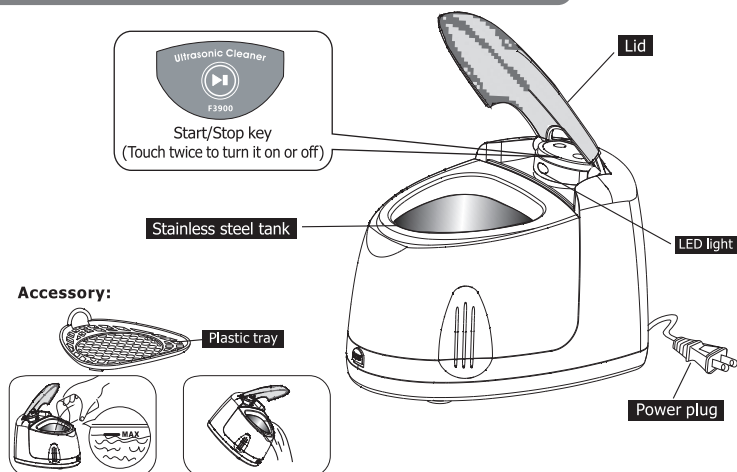
Ultrasonic cleaners use an ultrasonic transducer to generate ultrasound at very high frequency (42,000 Hz for model F3900). The ultrasound wave generates cavitations (millions of tiny invisible air bubbles) which implode and blast off debris from the items submerged in the liquid. Ultrasound wave reaches inside complex structures, crevices and deep holes in addition to outside surfaces. In a simple analogy, it acts similar to a brush but reaches places unreachable by a brush.

F3900 cleans dentures, retainers and other dental appliances effectively by removing debris with proper solutions. It maintains dentures, retainers and other appliances in a clean and refreshed condition and avoids calcium and other types of buildup. It is gentle yet thorough. Using an ultrasonic cleaner can avoid costly damages to dental appliances by brushing them manually with too much force.

If dental appliances have been used for extended period of time without proper care, stains from tobacco, coffee and wine, calculus and other types of buildup likely exist on them already. iSonic® White™ ultrasonic denture cleaning crystal #CSDW01 should be added. Combined together, they will remove the toughest stains in up to 15 minutes. Buildups are more difficult to remove but still can be removed with iSonic® White™ used in F3900. Be careful not to run it more than 2 cycles continuously to avoid overheating. Take a 10-minute break before running it again.

It's safer to avoid appliances with solder joints as they may not be strong enough. Do not use #CSDW01 or #CTAR01 with solder joints.

PRODUCT STRUCTURE AND ACCESSORY



Notes:

1. The tank's detachable and lock features are disabled to avoid accidental loss of electrical connection between the tank and the base. Please do not try to remove the tank by force. Use a cup to add water. Pour water out from the front with the entire unit together. Suggest to leave the unit by a sink.
2. If the blue light comes on but goes away in less than a second, the most likely cause is it has been used in a humid room and too much moisture has built up inside. Try to dry it up with a hair dryer or under sunshine and it will recover. Avoid using it in a humid room.
3. The plastic tray is not needed when cleaning dental appliances. It takes away certain amount of ultrasonic energy. It can be used for jewelry cleaning to prevent scratching.
4. **If condensation water forms underneath the lid, leave it open during running to avoid water dripping down on to the control panel when lid is open.**

Common Cleaning Methods

1. Daily Cleaning

Use tap water and add iSonic® AlignerClean™ tablet #CTAR01 or iSonic® White™ crystal #CSDW01 to clean, to remove odor and to kill bacteria.

For people who are sensitive to chemicals especially persulfate, use iSonic® NaturalKlean™ #CTNK01.

Caution: Do not use chilling cold water or hot water.

- 1). Add water to the cleaning tank between 1" and MAX line, and above the area to be cleaned. Do not allow water level rise above MAX line after adding the items.
- 2). Add half or one tablet of #CTAR01 or 1 to 2 tablets of #CTNK01 in the water.
- 3). Put items to be cleaned inside the tank.
- 4). Touch Start/Stop key twice to start cleaning. The unit will stop running automatically after 5 minutes.
- 5). Rinse the items thoroughly under running water.

2. To remove stains or buildups

Add iSonic® White™ #CSDW01 in the water to help remove stains, calculus and other types of buildup, and to disinfect.

- 1). Add water same as in 1.
- 2). Add half teaspoon of iSonic® White™ denture cleaning crystal.
- 3). Put the items in the tank.
- 4). Touch Start/Stop key twice to start cleaning. Once it stops, touch it twice again if additional time is needed. Caution: Do not run it continuously for over 2 cycles to avoid overheating.
- 5). Use mouth washing liquid in the tank instead of water to clean the item with one cycle will help to remove the trace of the taste of chemicals if desired.
- 6). Rinse the item under tap water thoroughly to remove the solution.

Note: iSonic® White™ crystal can also be used with reduced concentration (1/8 to 1/4 teaspoon) for daily cleaning.

Detailed Procedures:

STEP 1 Plug the power cord to an electrical outlet **with the correct voltage! Do not turn it on when empty or damage may occur.**

STEP 2 Remove the plastic tray. Put the dental appliances inside the tank. Add tap water or solution to the tank using a cup. Fill the tank with the liquid between 1" and MAX fill line marked inside the tank. Submerge the areas to be cleaned.

STEP 3 Touch the Start/Stop key twice to start cleaning. The unit will stop automatically after 5 minutes. For daily cleaning and disinfection, use one cycle. Items with heavy stains or buildup may need up to 15 minutes or three cycles. Take a break of 10 minutes if running 2 cycles continuously before starting the third cycle. Do not run the unit continuously for more than 2 cycles to prevent overheating which could damage the ultrasonic transducer.

STEP 4 Use mouth washing liquid in the tank instead of water to clean the item with one cycle will help to remove the trace of the taste of chemicals if desired.

STEP 5 Rinse the items under tap water thoroughly to remove the solution.

STEP 6 Empty the water or solution by pouring it out quickly so water will not drip over the housing. Pour water out from the front. Do not pour water out from the back side. Add water with a cup to rinse the tank. Wipe it clean.

STEP 7 Unplug the power cord. Wipe the unit with a wipe or a paper towel if needed.

Safety Warning and Precautions

- Do not use incorrect voltage!
- Always have water in the tank before starting the unit.
- Do not run the unit continuously for more than 2 cycles continuously to avoid overheating.
- Do not allow the water in the tank to drop below 1/2" from bottom. Do not run it empty or over the Max line!
- Avoid getting water inside the housing. Water on electronics will cause damage.
- Do not pour water out from the back side.
- If condensation water accumulates on the lid, leave it open during running.
- Do not use it in a humid room such as a washroom without an AC.
- It's safer to avoid appliances with solder joints as they may not be strong enough. Do not use #CSDW01 or #CTAR01 with solder joints.
- Do not place corrosive, flammable or ammoniated liquids in the tank, as they may ignite and/or cause injury, also cause damage to your ultrasonic cleaner, and it will void the warranty.
- Do not use liquid bleach, highly purified water or reverse osmosis water in the tank as they aggressively corrode metals.
- Do not use corrosive solutions such as paint thinner or acetone as they corrode plastics.
- Do not leave solution in the tank for extended time.
- Do not use hot water which may damage dental appliances and will cause overheating of the unit and may damage the transducer.
- Do not use the tank to soak the appliances with chemical solutions overnight or over extended time.
- Retain the packing carton for storage of your unit, and also in case it needs to be shipped for service.
- Unplug the power cord when the unit is not in use.
- Do not use wet hand to touch the plug or the outlet.
- Never run the unit if the plug or the cord is damaged.
- Keep it away from children or people without proper ability to handle the unit.
- If in doubt, please consult with iSonic Inc.

Safety and Operation Warnings

WARNING

DO NOT OPERATE THE UNIT IF ELECTRICAL CORD OR PLUG IS DAMAGED.

www.i-sonic.com/safety

WARNING

DO NOT SUBMERGE THE UNIT UNDER WATER OR CAUSE WATER TO GET INTO THE HOUSING.

www.i-sonic.com/safety

WARNING

DO NOT RUN IT CONTINUOUSLY. OVERHEAT AND DAMAGES WILL OCCUR.

www.i-sonic.com/safety

WARNING

DO NOT TOUCH ELECTRICAL CORD OR PLUG WITH WET HAND.

www.i-sonic.com/safety

WARNING

DO NOT USE FLAMMABLE OR HARMFUL LIQUID AS SOLUTION. DO NOT USE LIQUID BLEACH IN THE TANK.

www.i-sonic.com/safety

WARNING

DO NOT RUN THE UNIT DRY OR WITH WATER LEVEL BELOW MIN LINE OR ONE INCH. DAMAGE WILL OCCUR QUICKLY.

www.i-sonic.com/safety

CAUTION

DO NOT USE FOR POROUS STONES SUCH AS PEARL, OPAL, TURQUOISE, ETC.

www.i-sonic.com/safety

CAUTION

DO NOT CLEAN OIL TREATED STONES IN CHEMICAL SOLUTIONS.

www.i-sonic.com/safety

CAUTION

DO NOT USE FOR LOW QUALITY METAL ALLOYS SUCH AS NICKEL SILVER WITH THIN COATINGS.

www.i-sonic.com/safety

CAUTION

DO NOT USE FOR PLATED, WELDED, SOLDERED OR GLUED ITEMS.

www.i-sonic.com/safety

Warranty This unit carries one-year warranty for parts and labor against quality defects. Damages caused by misuse or careless uses of the unit will void the warranty. Customer is responsible for shipping both ways outside of continental USA and one way within. Purchasing from unauthorized dealers voids the warranty automatically. Contact us first before sending the unit back. To register for warranty, email the receipt and the serial number to warranty@isonicinc.com.



iSonic Inc.
2243 S. Throop St. Chicago, IL 60608 USA
Tel: +1-847-850-0404 info@isonicinc.com
www.isonicinc.com, www.ultrasoniccaging.com,
www.ultrasonicaccelerators.com

© iSonic Inc. V.20220510

iSonic® is a registered trademark of iSonic Inc. USA.

