

MODELS:
Flowtron Diplomat FC-8800C
FC-8800Y
Galaxie GL-6050C
GL-6050Y

FLY CONTROL

ELECTRONIC

OWNER'S MANUAL



ONE YEAR LIMITED WARRANTY

Flowtron/Galaxie, warrants your electronic insect killer to be free from defects in materials or workmanship under normal use and service for one year from date of the original purchase. All parts, except for burned out bulbs which are defective, will be repaired free of charge. Any implied warranties, including the implied warranty of merchantability are also limited in duration to the one year period from the original purchase date.

The provisions of this warranty shall not apply to any insect killer which has been subject to misuse, neglect or accident, nor which is used for a purpose for which it is not designed, or which shall have been repaired or altered in any way as to adversely affect its performance and reliability. Service by unauthorized parties voids your warranty.

Flowtron neither assumes nor authorizes any person to assume for it any other liability in connection with its products. No responsibility is assumed for any consequential damages that may result from the use of a Flowtron product, nor for damages due to accident, abuse, lack of responsible care, the affixing of any unauthorized attachment, loss of parts or subjecting this unit to any but the specified voltage. Some states do not allow the exclusion or limitation of incidental or consequential damages, so the above limitation or exclusion may not apply to you.

If the unit fails to operate during the warranty period, send the product along with purchase receipt showing purchase date and description to: Flowtron Service Center, 15 Highland Ave., Malden, MA 02148. Transportation costs for returning any defective product are the responsibility of the consumer.

This warranty gives you specific legal rights and may also have other rights which vary from state to state.

OPERATION • INSTALLATION • PARTS LIST

GENERAL:

Your new Diplomat insect killer combines 120 watts of black light energy with an exclusive glo-tube reflector, resulting in a powerful insect killing device that is ecologically safe, effective and economical to use. Light sensitive flying insect pests are attracted to the unit and are immediately eliminated as they pass through the electrically charged inner killing grid system. Dead insects drop into the removable insect collection tray for fast, easy, sanitary disposal.

Included with your Diplomat insect killer is a special slow-release strip containing Flowtron's Fly Sex Lure, a proven attractant for the common house fly (*Musca domestica* L.). This pheromone sex lure serves to enhance the Diplomat's effectiveness in eliminating house flies, making it a capable, dedicated fly control device.

IMPORTANT SAFETY INSTRUCTIONS

Please read these instructions before using the Flowtron Electronic Insect Killer and keep for future reference.

1. For Indoor or Outdoor use. Do not install near gas, oil or other flammable materials. When used outdoors, do not mount on house, deck or other similar structures.
2. Do not insert fingers or any foreign objects into the unit while it is connected to an electrical outlet.
3. Insect debris within the unit may contribute to fire. Clean dead insects from the unit frequently.
4. Disconnect unit from its power source when not in use, before servicing, re-lamping, cleaning or similar actions.
5. Use only Flowtron replacement lamp type BF-130; 40 watts maximum.
6. Do not clean this product with water or any other liquid or place it where it can fall into water; or clean it with a water spray or the like.
7. Do not abuse the power cord – never carry the unit by its cord or yank the cord to disconnect the plug. Keep cord away from heat, oil and sharp edges.
8. Keep extension cord connection dry and off the ground.
9. Store product indoors when not in use – out of reach of children.
10. Connect only to a circuit that is protected by a ground-fault circuit-interrupter (GFCI).

WARNING: Skin or eye damage may result from directly viewing the light produced by the lamps in this device. Always disconnect power before re-lamping or servicing.

PLACEMENT:

Proper placement of the device will enhance its effectiveness, range and safety.

Outdoors:

The Diplomat is recommended for areas up to two acres. Place the unit about 25 feet away from areas intended for human activity, between the source of insects and the area to be protected. Hang the unit approximately seven feet above the ground.

The Diplomat is designed for outdoor use and will not be damaged by rain or moisture. If, during heavy rains, excessive arcing occurs and is objectionable, simply disconnect the unit.

Indoors:

For best results, place the device adjacent to entrances, exits and in heavily infested areas. Place away from direct or reflected sunlight. When installing units in halls, passageways or aisles, maintain a clear width for continuous passage of minimum 36". (Reference: American Disabilities Act).

Height: Install the unit approximately six feet above the floor or higher in locations where temperatures are significantly cooler at the lower heights.

Spacing: Space evenly throughout the facility. Distances between units should be about 45 feet, (2,000 sq. ft. coverage).

INSTALLATION (see illustration 1)

Your unit is designed with versatile mounting capabilities. It can be wall mounted, ceiling suspended or hung from an outdoor bracket or pole. (Bracket and pole available as accessories.)

Bracket/Pole Assembly:

1. Remove hole plug from center of top hood using a screwdriver.
2. Remove 1" threaded nipple and hanging ring from hardware package.
3. Screw nipple into hanging ring (resulting in a hanging ring assembly).
4. Thread ring assembly into unit through hole in center of top hood.

Wall Mount Assembly:

1. Remove hood from top of unit by unscrewing the sheet metal screw located on top of the hood.
2. Remove one of the two key slotted brackets and two nuts and two bolts from hardware package.
3. Locate the two holes on edge of top plate that match holes of key slotted bracket. Secure bracket to top plate using the two supplied nuts and bolts (see illustration 1).
4. Mount the unit to the wall by installing a #8 steel screw into a wall stud and placing the keyhole bracket onto the screw.

Ceiling Suspension Assembly: (INDOOR USE ONLY)

1. Remove hood from top of unit by unscrewing the sheet metal screw located on top of the hood. Remove collection tray from bottom of unit by spreading the sides of the tray away from the two mounting clips on the unit base.
2. Remove the two key slotted brackets and the four nuts and four bolts from hardware package.
3. Locate the two holes on edge of top plate that match holes of the key-slotted brackets. Secure bracket to top plate using two of the supplied nuts and bolts.

4. Locate the two holes on base plate that match holes of the other key-slotted bracket and secure bracket to base plate using the other two nuts and bolts.
5. Remove the two 3/4" threaded nipples, two large nuts and two hanging rings from hardware package.
6. Screw the nipple into the threaded ends of hanging rings.
7. Insert threaded nipples with hanging ring into key hole slot in bracket and secure using large nuts.
8. Replace the top hood and the bottom collection tray.
9. Suspend unit from ceiling using chain, hooks, or other suitable means. See the exploded view on back page for additional assembly information.

Note: Collection tray **MODEL CT-850** is available as an accessory and should be used when unit is ceiling suspended to collect dead insects that fall from unit's charged grids.

EXTENSION CORDS:

Appropriate extension cords and devices for retaining an extension cord connection to the insect killer power cord are available at your local hardware or home supply store.

Use only three-wire extension cords which have three-prong grounding type plugs and three-pole receptacles which accept the products plug. **Replace or repair damaged cords.**

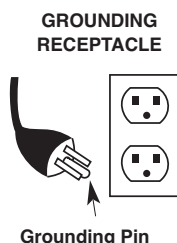
Outdoor extension cords must be used with insect killers intended for outdoor use. Use extension cords marked SJW-A or SJTW-A and tagged "suitable for use with outdoor appliances". The electrical rating of the extension cord must be as great as the electrical rating of the insect killer.

GROUNDING INSTRUCTIONS:

Your insect killer is equipped with an appropriate three-conductor cord and three-prong grounding type plug to fit the proper grounding type receptacle. To reduce the risk of an electrical shock, the plug must be plugged into an appropriate outlet that is properly installed and grounded.

Your insect killer has a grounding plug that looks like the plug illustrated, and is intended for use on a circuit that has an outlet as shown.

Consult a qualified electrician or serviceman if the grounding instructions are not completely understood, or if in doubt as to whether proper grounding exists.



COLLECTION TRAY: (see illustration 2)

Your unit is equipped with a sanitary, removable collection tray for indoor or outdoor use. When vertically mounted, this tray will collect the dead insects as they fall from the electrically charged grids.

To disengage collection tray at bottom of unit spread the sides of the tray away from the two mounting clips on the unit base.

To attach collection tray, align the two holes on either side of the tray with the mounting clips located on the base of the unit. Spread the sides of the tray and engage the holes in the tray with the clips on the base.

FLY SEX LURE:

Included with your unit is a specially designed slow-release strip containing (Z)-9-tricosene, a non-toxic and odorless fly lure, to substantially increase the effectiveness of the Fly Control Unit.

U.S. Government researches have demonstrated that (Z)-9-tricosene, a synthetic compound identical to the sex pheromone of house flies (*Musca domestica* L.) enhances a trap's effectiveness by a factor of three to six times that of non-baited traps.

To install the Fly Sex lure, attach the strip to the outer protective grille. For best results the fly lure slow-release strip should be replaced every 30 days. FA-5000 are available from your dealer or on-line at www.flowtron.com.

When replacing a used lure, wrap it in newspaper and dispose in trash. Always wash hands thoroughly after contact with the lure strip.

MAINTENANCE:

Other than the recommended cleaning and bulb/starter replacement, no further maintenance is required.

Cleaning:

Always disconnect the unit from its power source before servicing.

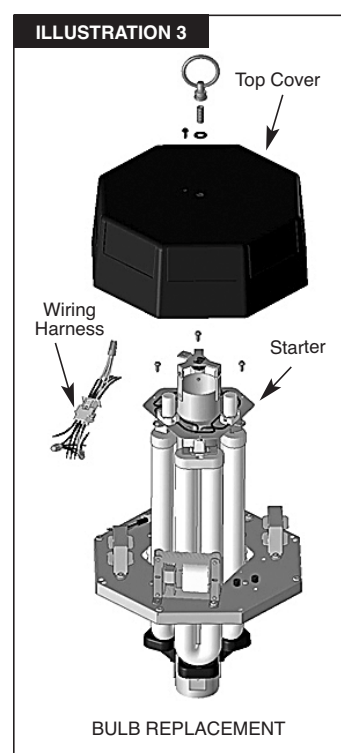
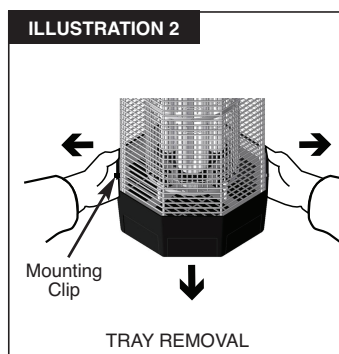
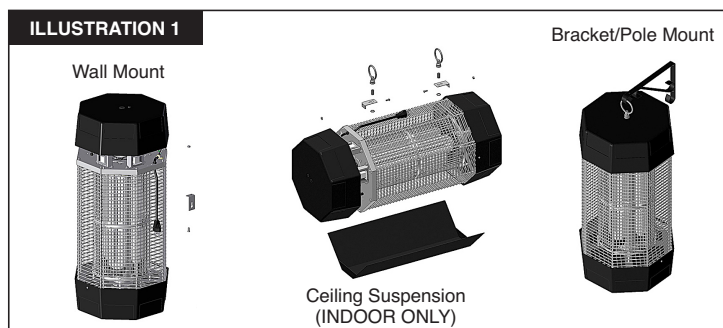
To reduce the risks of fire, clean your unit frequently. Cleaning should include the removal of dead insects and insect debris from the killing grid, bulbs and glow-tube. Clean using a small brush, a blower such as a portable hair dryer or the exhaust attachment of a vacuum cleaner. **Do not spray with a water spray or the like.**

BULB/STARTER REPLACEMENT: (See Illustration 3)

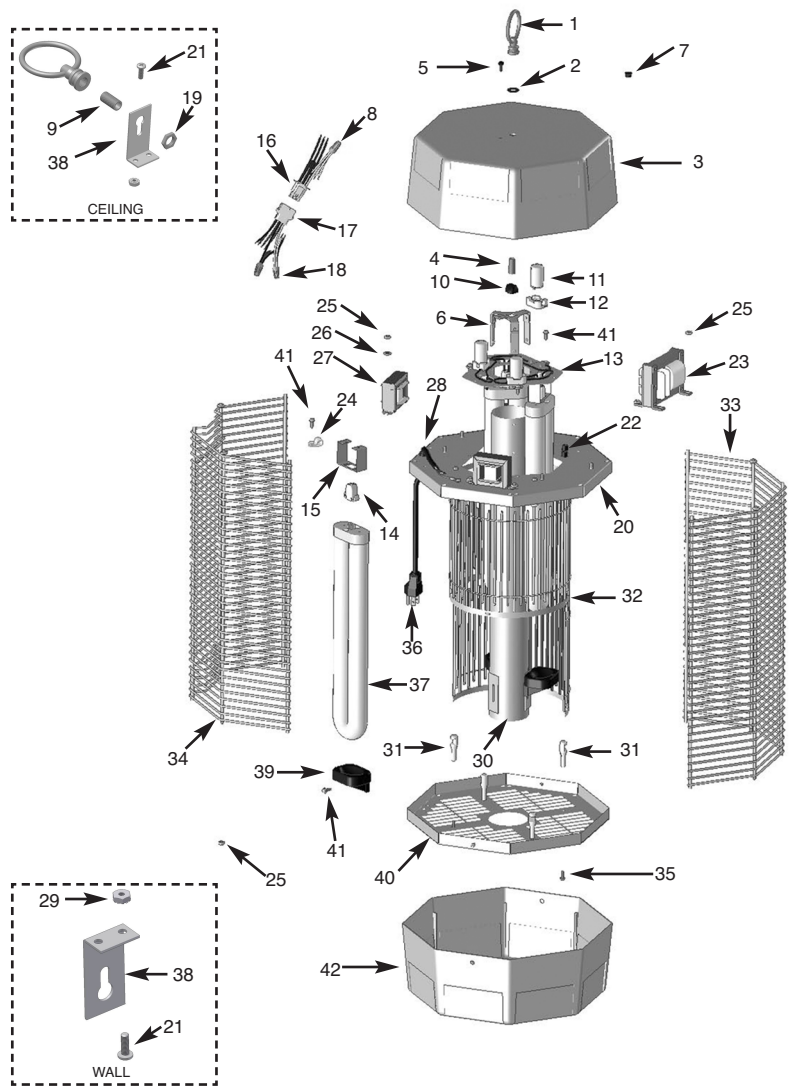
Your unit uses three BF-130 bulbs, and three F-22 starters, which may be purchased from your dealer or on-line at www.flowtron.com.

To replace bulbs or starters, disconnect unit from its power source and proceed as follows:

1. Remove top cover by unscrewing hanging ring and adjacent screw.
2. Unplug wiring harness.
3. Remove three sheet metal screws securing glo-tube bulb assembly to top plate.
4. Remove the glo-tube assembly through the top plate.
5. Replace bulb(s).
6. Replace starter, if required.



PARTS LIST			
REF. #	PART #	DESCRIPTION	QTY.
1	554 722	HANGING RING	2
2	567 420	NEOPRENE WASHER	1
3	555 2592	HOOD, TOP	1
4	596 1565 P02	THREADED NIPPLE, 1" LONG.	1
5	245 6246 P28	SHEET METAL SCREW, BLK, # 8 X 1/2	1
6	505 7225	HANGING BRACKET ASSY	1
7	596 7183	HOLE PLUG	1
8	595 1632	WIRE CONNECTOR (ORG)	2
9	596 1565 P01	THREADED NIPPLE, 3/4" LONG	2
10	545 2009	CAGE NUT, 1/8-27	1
11	531 6750	STARTER	3
12	571 417	STARTER SOCKET	3
13	505 6023	MOUNTING PLATE ASSY	1
14	571 6357	BULB SOCKET	3
15	552 10172	BULB SOCKET BRKT	3
16	571 1273	PLUG, MALE	1
17	571 1272	SOCKET, FEMALE	1
18	595 1506	WIRE CONNECTOR (IVORY)	3
19	596 983	LOCKNUT, HANGING RING	2
20	505 10221	TOP PLATE ASSY	1
21	245 6224 P32	PAN HEAD MACH SCREW, 8.32 X 1/2	4
22	596 395	BUSHING, .25 ID	2
23	576 4659	TRANSFORMER	1
24	596 940 P05	CABLE CLAMP	1
25	245 6269 P06	NUT, SELF-LOCKING # 10-32	16
26	245 6272 P04	FLAT WASHER, # 10	6
27	505 4561	BALLAST ASSY	3
28	596 738	BUSHING, .38 ID	1
29	245 6269 P03	NUT, SELF-LOCKING, #8-32	4
30	568 4618	GLO-TUBE	8
31	544 5826	GRID INSULATOR	1
32	505 6161	GRID ASSY	1
33	572 10199	GRILLE, FRONT	1
34	572 10200	GRILLE, BACK	1
35	245 6245 P12	SHEET METAL SCREW, #6x 1/2	8
36	505 2657	POWER CORD ASSY	1
37	BF 130	BLACK LIGHT BULB	3
38	552 1566	WALL MOUNTING BRACKET/CEILING	2
39	555 4246 P02	BULB RETAINER	3
40	505 10222	BOTTOM PLATE ASSY	1
41	245 6245 P28	SHEET METAL SCREW, # 8 X 1/2	8
42	555 2593	HOOD, BOTTOM	1
43	557 10283	OWNER'S MANUAL (not shown)	1
220 VOLT MODEL GL-6050Y/FC-8800Y			
23	576 3075	TRANSFORMER	1
27	532 10272	BALLAST 230V (SINGLE)	1
	532 10273	BALLAST 230V (DOUBLE)	1
37	BF-150	BLACK LIGHT BULB	3



TROUBLESHOOTING AND REPAIR ANALYSIS		
Problem	Possible Cause	Correction
A. Bulbs do not light and no voltage on grid.	1. No electrical power.	1. Check fuse or circuit breaker.
B. Bulb(s) light, but no voltage on grid.	1. Shorted grids. 2. Transformer defective.	1. Examine grids to see if grid rods are free from foreign material, dirt or build-up of dead insects. 2. Replace transformer.
C. Grid voltage present, but bulbs do not light.	1. Bulb(s) not seated properly. 2. Starter defective. 3. Burned out bulb(s). 4. Ballast defective.	1. Check all sockets for proper seating and alignment. 2. Replace. 3. Replace. 4. Replace.
D. Intermittent or continuous sparking between grids.	1. Gap between grid rods too small. 2. Grid clogged with foreign material. 3. Grid not seated in insulator.	1. Unplug unit and adjust grid rods by bending back into alignment using screwdriver blade. 2. Clean grid using a brush or air blower. 3. Look for proper grid seating at all insulators.
E. Decrease in luring effectiveness.	1. Insufficient black light output. 2. Fly Lure no longer effective.	1. Replace bulb(s). 2. Replace lure.

FLY CONTROL ACCESSORIES



POWERFUL FLY SEX LURE — Model FA-5000

Makes your bug killer more effective in luring and killing house flies. Hooks onto outer grill to provide 24 hour luring power. Effective for 30 days.



REPLACEMENT BULBS

Minimum yearly replacement recommended to retain maximum black light output.



COLLECTION TRAY Model CT-850

For use when unit is horizontally mounted to catch dead insects. Black tray attaches to side of unit.